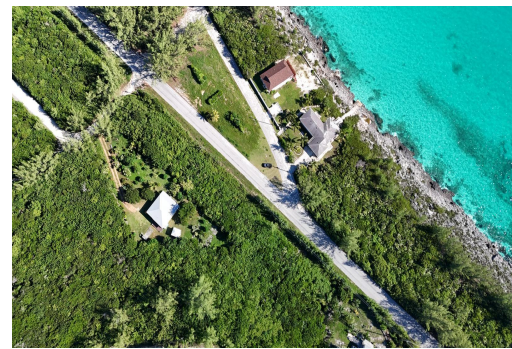
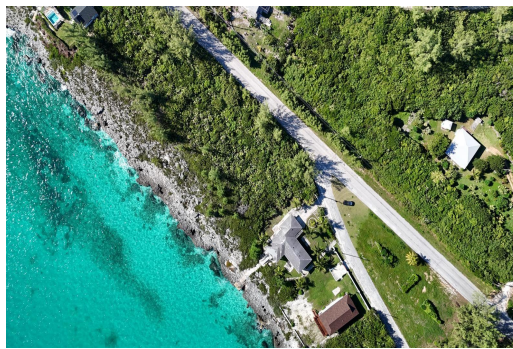


# RAINBOW BAY SUBDIVISION, Rainbow Bay, Eleuthera



**This beautiful oceanfront lot 45 block 15 covers 15,300 square feet, featuring sweeping views of...**

This beautiful oceanfront lot 45 block 15 covers 15,300 square feet, featuring sweeping views of the turquoise waters of the Caribbean. Situated on Wandering Shore Drive in Rainbow Bay, Eleuthera, it offers an exceptional opportunity to build your dream home. Enjoy elevated landscapes, stunning scenery, and a short stroll to Rainbow Bay Beach, with easy access to both Governors Harbour Airport and North Eleuthera Airport....read more on our website.

Bedrooms: 0  
Bathrooms: 0  
Lot Size: 15300  
Subdivision: Rainbow Bay  
Features: Easy Access,  
Highway Access, Level  
Lot, Marina Nearby,  
None, Pasture,  
Recreation Nearby, Rural  
Setting, View - Ocean,  
Waterfront - Ocean

RAINBOW BAY SUBDIVISION,  
Rainbow Bay, Eleuthera  
Phone:



**\$169,000 ID# M59588 [View Online](#)**  
**[www.sarlesrealty.com](http://www.sarlesrealty.com)**