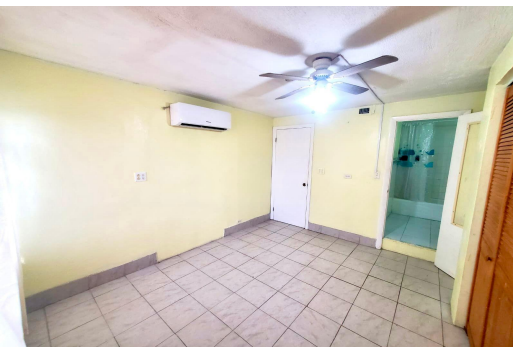


# LYSANDER ROAD, Stapledon Gardens, New Providence/Paradise



## Looking for a well kept & budget-friendly cozy place to call home? This semi-furnished rental...

Looking for a well kept & budget-friendly cozy place to call home? This semi-furnished rental in Stapledon Gardens is an ideal choice for a single professional or a couple seeking a comfortable living space in a convenient location. The layout offers a comfortable living space where you can relax after a long day or enjoy a quiet evening in. This apartment comes semi-furnished & equipped with all the necessary appliances to meet your needs. The bedroom is spacious providing a good space for rest and relaxation. Conveniently located in Stapleton Gardens you would be minutes away from Goodman's Bay Beach, Bahamar Resort, shopping, schools, dining and entertainment making your commute easy and practical! Don't miss out on this lovely rental in Stapledon Gardens. Contact us today to schedu...read more on our website.

Bedrooms: 1  
Bathrooms: 1  
Lot Size: 8500  
Subdivision: Stapledon Gardens  
Features: None

LYSANDER ROAD, Stapledon Gardens, New Providence/Paradise Island  
Phone:



**\$1,200 ID# M59564** [View Online](#)  
[www.sarlesrealty.com](http://www.sarlesrealty.com)