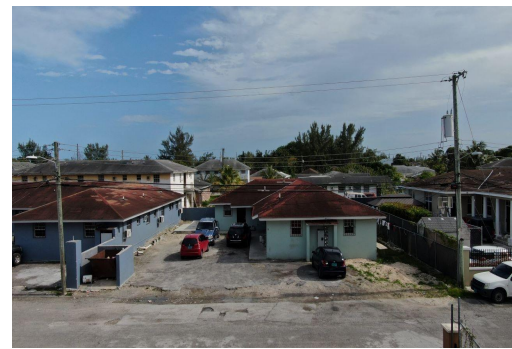
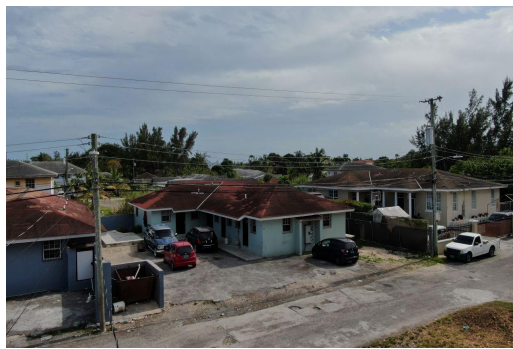
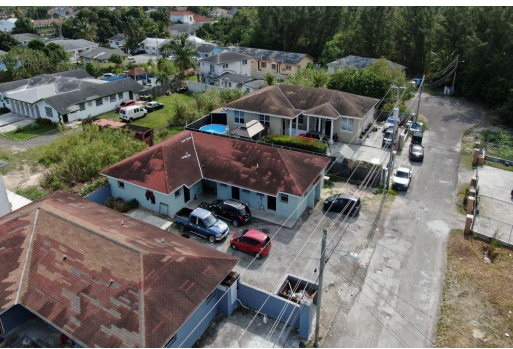


BAILLOU ROAD, Blue Hill Road, New Providence/Paradise Isl



Welcome to #18 Carmen Close Five plex, a great investment opportunity! This Five plex is now...

Welcome to #18 Carmen Close Five plex, a great investment opportunity! This Five plex is now available for sale, offering incredible potential for both investors and homeowners. The property sits on a 5,870 sq. ft. lot, with an approximate interior square footage of 2,520 sq. ft. As an investment, this property generates a yearly income of \$27,000. All of the units have a 1 bed, 1 bath layout....read more on our website.

Bedrooms: 5

Bathrooms: 5

Lot Size: 5870

Subdivision: Blue Hill
Road

BAILLOU ROAD, Blue Hill Road,
New Providence/Paradise Island

Phone:

Features: Can Be Rented,
Easy Access, Highway
Access, None, Shopping
Nearby



\$299,000 ID# M57006 [View Online](#)
www.sarlesrealty.com