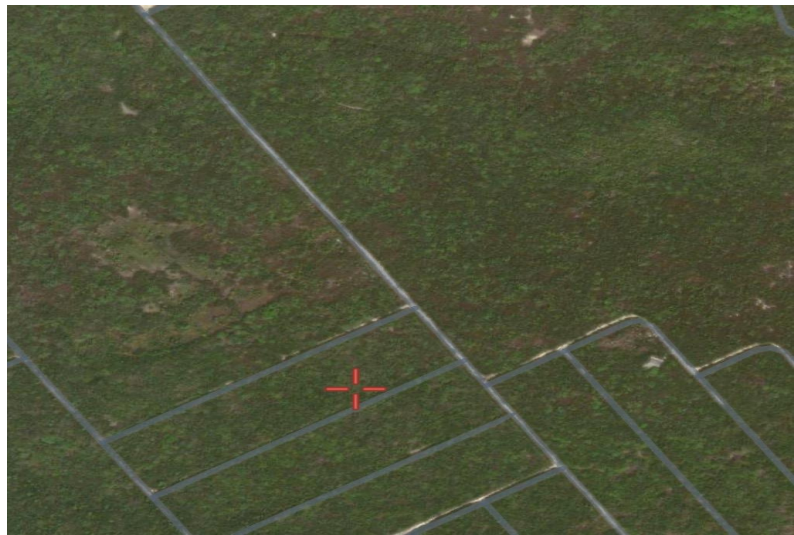
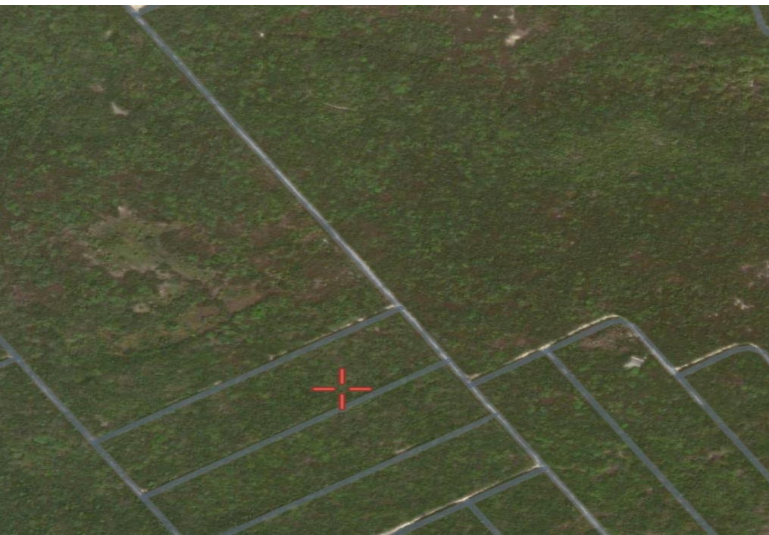


29 MADEIRA ROAD, Bahama Sound, Exuma & Exuma



2900	2901	2902	2903	2904	2905
2906	2907	2908	2909	2910	2911
2912	2913	2914	2915	2916	2917
2918	2919	2920	2921	2922	2923
2924	2925	2926	2927	2928	2929
2930	2931	2932	2933	2934	2935
2936	2937	2938	2939	2940	2941
2942	2943	2944	2945	2946	2947
2948	2949	2950	2951	2952	2953
2954	2955	2956	2957	2958	2959
2960	2961	2962	2963	2964	2965
2966	2967	2968	2969	2970	2971
2972	2973	2974	2975	2976	2977
2978	2979	2980	2981	2982	2983
2984	2985	2986	2987	2988	2989
2990	2991	2992	2993	2994	2995
2996	2997	2998	2999	3000	3001

Located in the northern side of Exuma next to the tranquil Forest community with locals and...

Located in the northern side of Exuma next to the tranquil Forest community with locals and residents. The Forest area has a primary school, small convenienc stores, restaurants and bars....read more on our website.

- Bedrooms: 0
 - Bathrooms: 0
 - Lot Size: 8000
 - Subdivision: Bahama Sound
 - Features: None, Quiet Area, Rural Setting
- 2982 MADEIRA ROAD, Bahama Sound, Exuma & Exuma Cays
Phone:



\$10,000 ID# M59495 [View Online](#)
www.sarlesrealty.com