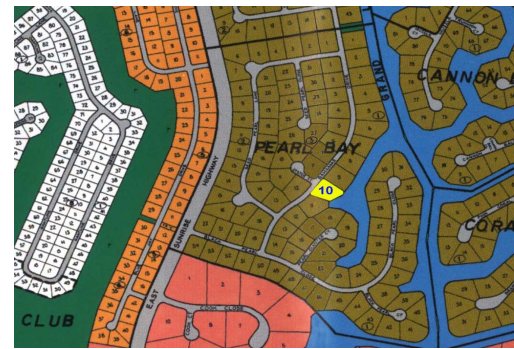
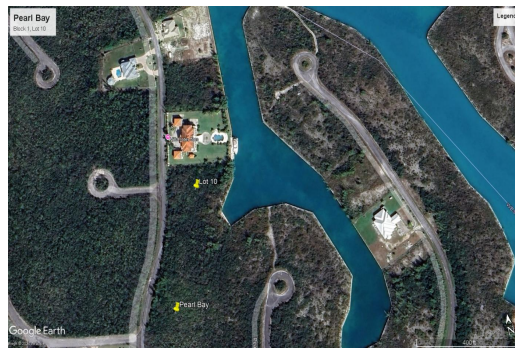


Canal-front Vacant Land in Pearl Bay



Canal-Front Multi-family Hi-Rise

Unlock the potential of prime real estate in the heart of Pearl Bay with this exceptional canal-front multi-family hi-rise. Spanning 1.11 acres, this property offers breathtaking views and unparalleled access to the water, making it a unique investment opportunity.

Invest in a property that promises not just stunning views, but also substantial returns. With the real estate market in Pearl Bay on the rise, this canal-front multi-family hi-rise is a smart choice for savvy investors looking to capitalize on a flourishing area.

Seize this opportunity to be part of Pearl Bay growth story where breathtaking vistas meet boundless potential. Don't miss out on your chance to invest in a future filled with possibilities!...read more on our website.

Lot Size: 48,248 sq ft
Maint. Fees: 0
Subdivision: Pearl Bay
Features: Canal Front



Tiffany Smith

Phone: (242) 727-8066
kekris4@gmail.com



\$130,000 ID# 54311 [View Online](#)
www.sarlesrealty.com