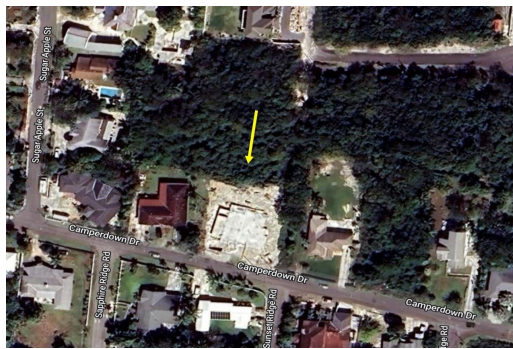


SANS SOUCI, Eastern Road, New Providence/Paradise Island



A residential vacant lot with great elevation located in Sans Souci on a private, dead end road.

A residential vacant lot with great elevation located in Sans Souci on a private, dead end road....read more on our website.

Bedrooms: 0
Bathrooms: 0
Lot Size: 10816
Subdivision: Eastern Road
Features: None

SANS SOUCI, Eastern Road,
New Providence/Paradise Island
Phone:



\$120,000 ID# M57692 [View Online](#)
www.sarlesrealty.com