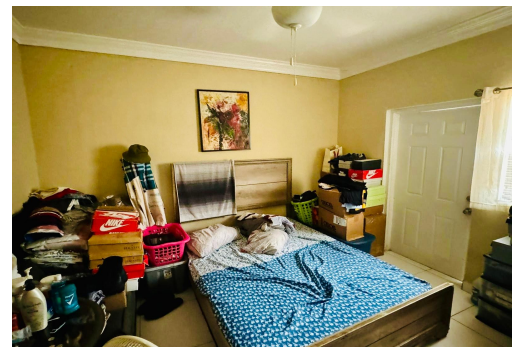


# VILLAS CONDOMINIU, Soldier Road, New Providence/Par



## This delightful 1-bedroom, 1-bathroom condo presents an ideal opportunity for buyers seeking...

This delightful 1-bedroom, 1-bathroom condo presents an ideal opportunity for buyers seeking comfort and convenience. Situated in a secure, gated community within the desirable Garden Hills Subdivision, this property offers both tranquility and accessibility. Located just off Soldier Road, it provides easy access to various amenities and is within a short drive to key destinations. Priced attractively, this condo is a perfect blend of value and location....read more on our website.

Bedrooms: 1

Bathrooms: 1

Lot Size: 1500

Subdivision: Soldier Road

Features: Fully Fenced

JASMINE VILLAS CONDOMINIU,

Soldier Road, New

Providence/Paradise Island

Phone:



**\$100.000 ID# M59044** [View Online](#)  
[www.sarlesrealty.com](http://www.sarlesrealty.com)