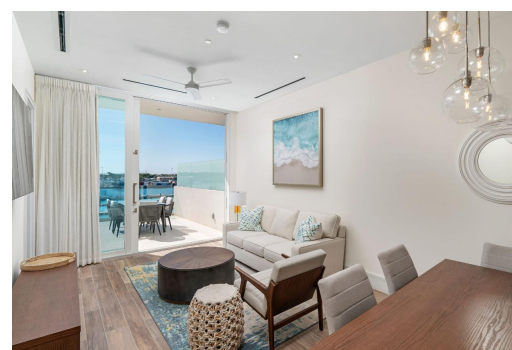
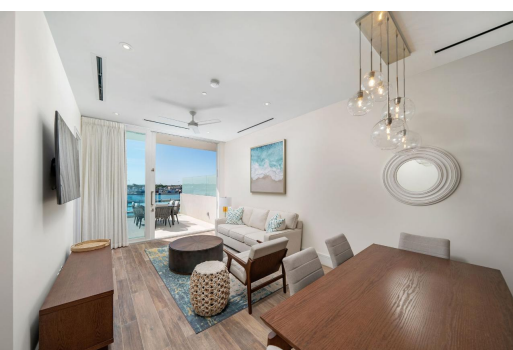
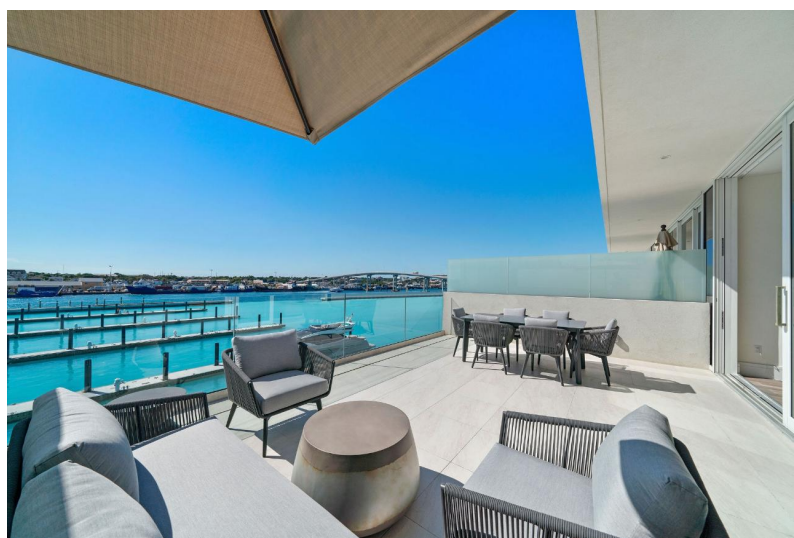
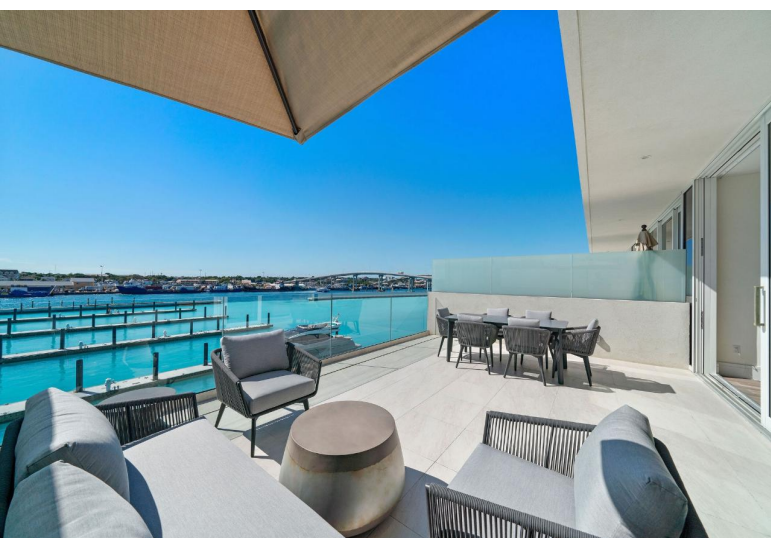


# STERLING COMMONS EAST, Paradise Island, New Providence/Paradise



## Indulge in awe-inspiring vistas of the Hurricane Hole Superyacht Marina and Nassau Harbour from...

Indulge in awe-inspiring vistas of the Hurricane Hole Superyacht Marina and Nassau Harbour from this contemporary two-bedroom, two-bathroom condominium situated within Sterling Commons at Paradise Landing. Boasting modern elegance and island allure, this freshly built, tastefully furnished unit on the penthouse floor epitomizes luxury living. From top-of-the-line appliances to quartz countertops, every detail exudes quality and style. Enjoy the convenience of central air conditioning, laundry facilities, and hurricane-rated doors leading to a spacious private balcony, perfect for soaking in the stunning views. Nestled within Paradise Island's premier luxury condominium community, Sterling Commons offers residents access to a dynamic lifestyle centered around a state-of-the-art super yacht...read more on our website.

Bedrooms: 2  
Bathrooms: 2  
Lot Size: 1356  
Subdivision: Paradise Island  
Features: 24 Hour Security, Family Oriented, Furnished, Harbour, Impact Windows, Landscaped, Main Level Entry, Marina Nearby, Pets Allowed, Road - Paved, Shopping Nearby, Stand-by Generator, Swimming Pool, Waterfront - Ocean

STERLING COMMONS EAST,  
Paradise Island, New  
Providence/Paradise Island  
Phone:



**\$1,200,000 ID# M59371** [View Online](#)  
[www.sarlesrealty.com](http://www.sarlesrealty.com)