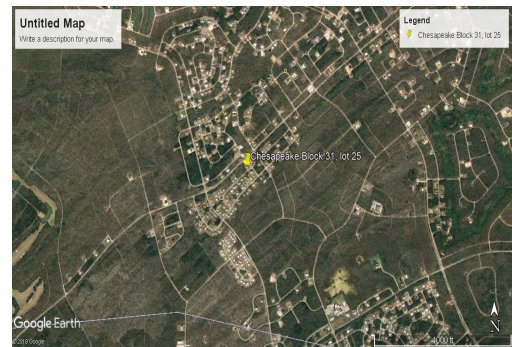
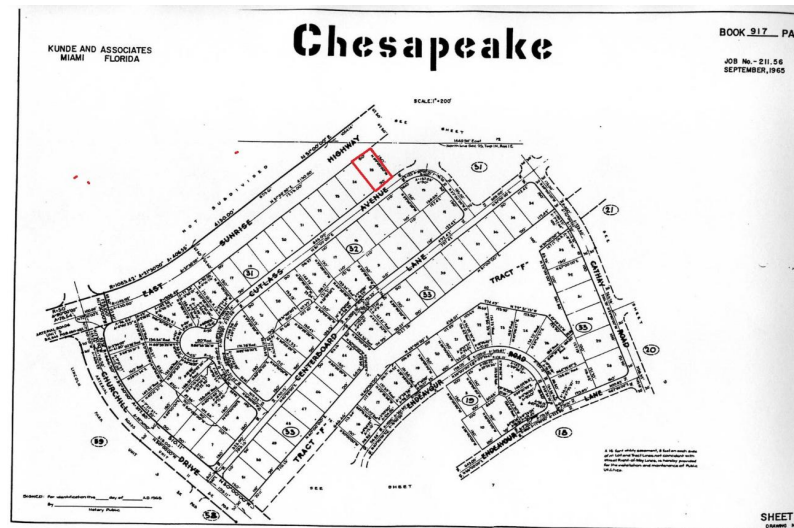
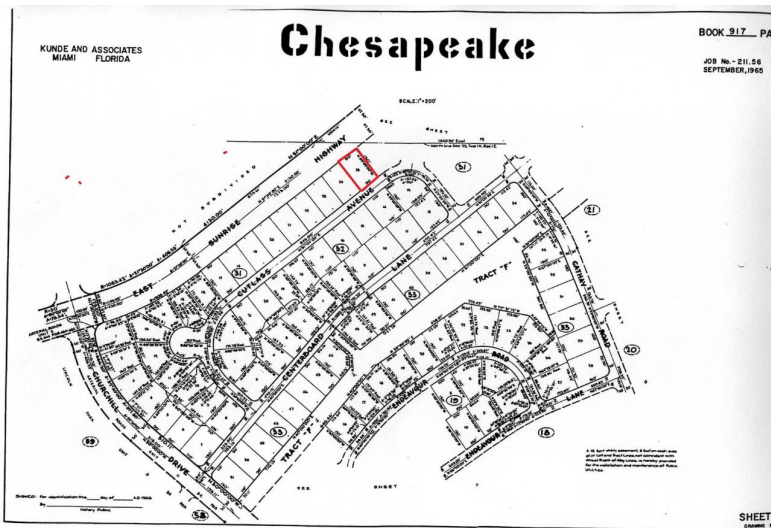


CUTLASS AV. CHESAPEAKE, Chesapeake, Grand Bahama/Freeport



With all utilities in place and an annual service charge of \$110.00, this single family lot, in the...

With all utilities in place and an annual service charge of \$110.00, this single family lot, in the developing area of Chesapeake, is perfect as the location of a starter home for young professionals or an investment for the future. The area is very convenient and just a few minutes drive to both the center of town as well as shopping and entertainment and schools. This property is serviced by all utilities and the homes there are all of new and modern construction and in good condition. Come and see us so we can discuss the possibilities....read more on our website.

- Bedrooms: 0
- Bathrooms: 0
- Lot Size: 13500
- Subdivision: Chesapeake
- Features: Easy Access, Family Oriented, Golf Course Nearby, None, Quiet Area, Road - Paved

25 CUTLASS AV.
CHESAPEAKE, Chesapeake,
Grand Bahama/Freeport
Phone:



\$18,000 ID# M55834 [View Online](#)
www.sarlesrealty.com