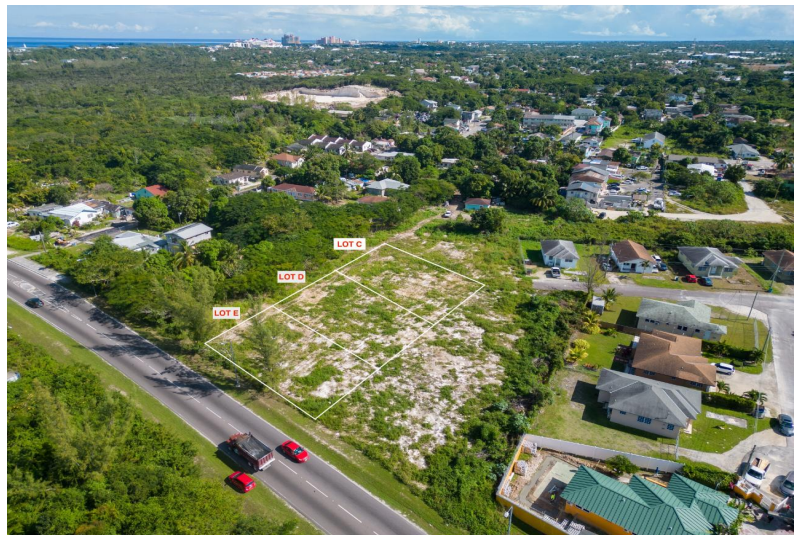
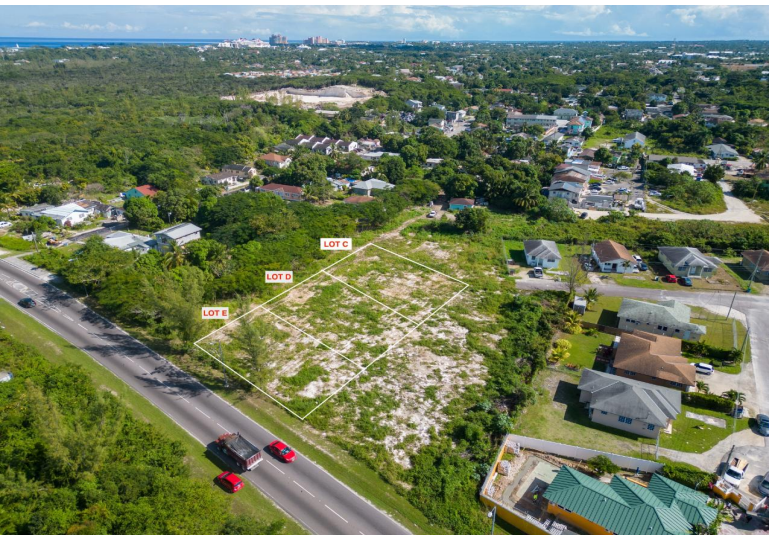


# MULTI FAMILY LOTS, Chippingham, New Providence/Paradise Island



## Multi-family lots investment opportunity with great highway access from Saunders beach roundabout...

Multi-family lots investment opportunity with great highway access from Saunders beach roundabout or Thompson Boulevard and JFK. These lots offer quick access to amenities from a quiet residential area. Suitable for an apartment complex, fourplex, triplex, or duplex. Can be purchased 1 lot or up to 3 lots (C,D and E) all next to each other (please refer to the plot plan and approximate boundary outline). Please ensure you are pre-qualified if you plan to finance. If you require assistance with your pre-qualification please ask....read more on our website.

Bedrooms: 0  
Bathrooms: 0  
Lot Size: 24417  
Subdivision: Chippingham  
Features: Central location,  
Cul-de-sac, Easy Access,  
Highway Access, Level  
Lot, None, Private  
Setting, Quiet Area,  
Recreation Nearby,  
Recreational, Shopping  
Nearby

LAPILLI MULTI FAMILY LOTS,  
Chippingham, New  
Providence/Paradise Island  
Phone:



**\$375.000 ID# M55871** [View Online](#)  
[www.sarlesrealty.com](http://www.sarlesrealty.com)