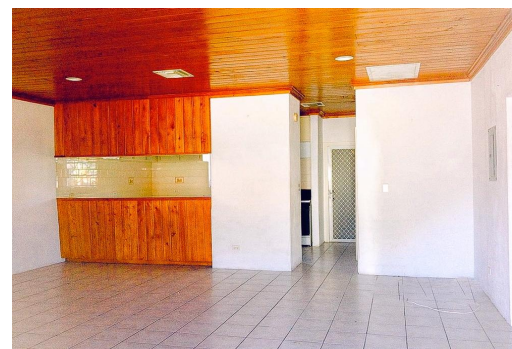


EDEN ESTATES, Eastern Road, New Providence/Paradise Island



Situated just off Eastern Road, this awesome 2,625 Sq. Ft. Duplex stands as a testament to quality...

Situated just off Eastern Road, this awesome 2,625 Sq. Ft. Duplex stands as a testament to quality and comfort. Located in a serene and well-established residential area, this property offers a tranquil escape from the hustle and bustle. Comprising 4 bedrooms and 2 bathrooms, this duplex is a sanctuary of space and functionality. The thoughtful design allows for an open living/dining and kitchen layout, tiled throughout the entire unit. The nine-foot-high ceilings not only elevate the aesthetic appeal but also create an airy ambiance, making the rooms feel expansive and inviting. Situated on an L-shaped lot, this duplex holds the promise of potential. With the possible option to expand and accommodate another one-bedroom unit, envision the transformation into a triplex that enhances both l...read more on our website.

Bedrooms: 4
Bathrooms: 2
Lot Size: 8960
Subdivision: Eastern Road
Features: None

EDEN ESTATES, Eastern Road,
New Providence/Paradise Island
Phone:



\$385,000 ID# M56037 [View Online](#)
www.sarlesrealty.com