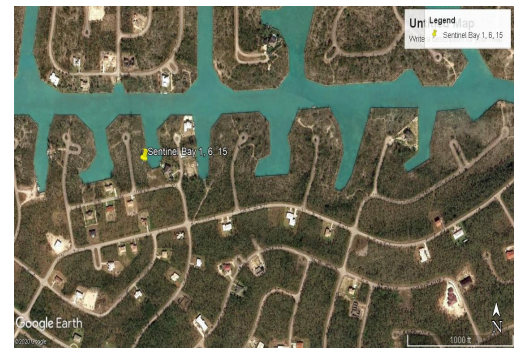
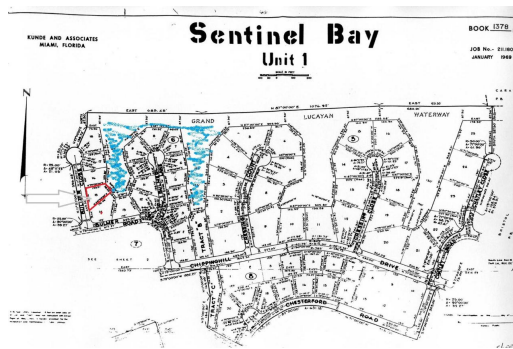


# BULMER CLOSE, Sentinel Bay Subdivision, Grand Bahama/Fr



## Multi family property where Service charges have been paid for life! Beautiful views for a serene...

Multi family property where Service charges have been paid for life! Beautiful views for a serene and private home on the canal. This property offers itself for your dream home especially if you love the water. Properties of this type are the most valuable and prices can only rise with time so it makes a sound investment also.....read more on our website.

Bedrooms: 0  
Bathrooms: 0  
Lot Size: 17000  
Subdivision: Sentinel Bay Subdivision  
Features: Canal Front, Easy Access, Golf Course Nearby, Level Lot, Marina Nearby, No Thru Road, None, Quiet Area, Recreation Nearby, Road - Paved, Shopping Nearby, View - Ocean

15 BULMER CLOSE, Sentinel Bay Subdivision, Grand Bahama/Freeport  
Phone:



**\$60,000 ID# 44580** [View Online](#)  
[www.sarlesrealty.com](http://www.sarlesrealty.com)