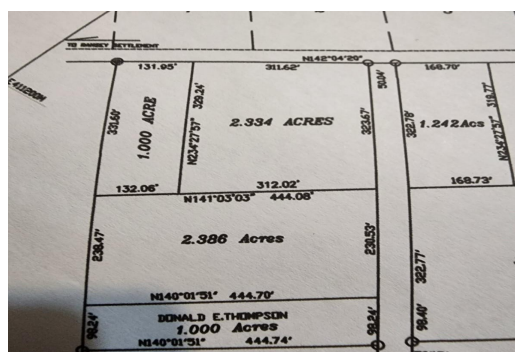


QUEENS HIGHWAY, Jimmy Hill, Exuma & Exuma Cays



This is an extraordinary chance to secure a piece of Exuma's exclusive commercial acreage!...

This is an extraordinary chance to secure a piece of Exuma's exclusive commercial acreage! Feast your eyes on this cutting-edge investment opportunity: a remarkable 1.334-acre lot, perfectly positioned along the Queen's Highway, boasting breathtaking two-story ocean views! Location is key, and this remarkable acreage enjoys a prime spot merely five minutes away from the Georgetown Exuma airport. It offers a jaw-dropping 120 feet of highway frontage, presenting endless possibilities for upscale ventures catering to the affluent communities of Casa Del Mar Resort and Tar Bay which are 2 minutes away. The adjacent 1 acre parcel was just recently sold so act swiftly, and position yourself at the forefront of Exuma's thriving real estate market. Don't miss out on this extraordinary chance to sh...read more on our website.

Bedrooms: 0

Bathrooms: 0

Lot Size: 58109

Subdivision: Jimmy Hill

Features: None

QUEENS HIGHWAY, Jimmy Hill,

Exuma & Exuma Cays

Phone:



\$300.000 ID# M59267 View Online
www.sarlesrealty.com