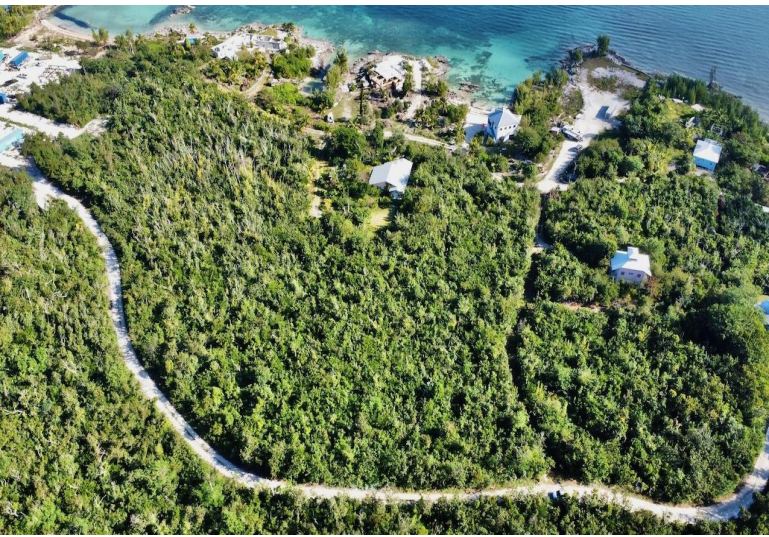


GREAT CISTERN DRIVE, Marsh Harbour, Abaco



Nestled in the desirable Great Cistern subdivision near Murphy Town, Central Abaco, this vacant lot...

Nestled in the desirable Great Cistern subdivision near Murphy Town, Central Abaco, this vacant lot spans approximately 21,540 square feet, offering a prime opportunity for single or multi-family residential development. Located within two miles of Marsh Harbour, the property benefits from its proximity to the area's economic hub while providing a serene, eco-friendly environment with overhead electricity, telephone lines, public water access, and paved roads nearby. With no zoning or covenant restrictions and a neighborhood that boasts mid to upper-class estate homes and waterfront cottages, this flat, brush-covered lot is perfectly positioned for future growth....read more on our website.

Bedrooms: 0
Bathrooms: 0
Lot Size: 21450
Subdivision: Marsh Harbour
Features: Central location, Easy Access, None, Quiet Area, Recreation Nearby, Road - Gravel, Treed Lot, View - Ocean

GREAT CISTERN DRIVE, Marsh Harbour, Abaco
Phone:



\$50,000 ID# M59285 [View Online](#)
www.sarlesrealty.com