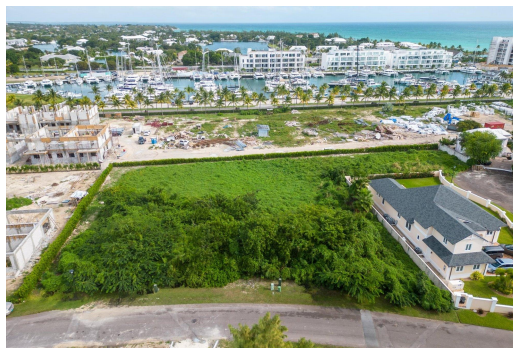


PALM CAY LOT, Yamacraw, New Providence/Paradise Island



Explore the charm of Palm Cay's beachfront community with a unique opportunity to own a prime...

Explore the charm of Palm Cay's beachfront community with a unique opportunity to own a prime lot in one of Nassau's most sought-after residential developments. Situated at the core of lot section 5, this parcel ensures privacy while remaining close to the Palm Cay Clubhouse, marina, and beach. Lot no. 119 spans 10,819 sq. ft, offering ample space for a dream home plus an outdoor retreat. For potential residents, the chance is open to build your envisioned home with architectural freedom and Palm Cay's design standards, along with the convenience of their upcoming retail furniture shop. Palm Cay's amenities include 24-hour security, a clubhouse with two pools, indoor and outdoor dining, tennis courts, a spa, a gym, and the Palm Cay Marina - a full-service facility for boating enthusiasts...read more on our website.

Bedrooms: 0

Bathrooms: 0

Lot Size: 10819

Subdivision: Yamacraw

Features: 24 Hour

Security, Can Be Rented,

Easy Access, Family

Oriented, Gated

Community, Marina

Nearby, Pets Allowed,

Recreation Nearby, Road

- Paved, Shopping

Nearby, Short Term

Allowed

PALM CAY LOT, Yamacraw, New

Providence/Paradise Island

Phone:



\$330,000 ID# M59017 [View Online](#)
www.sarlesrealty.com