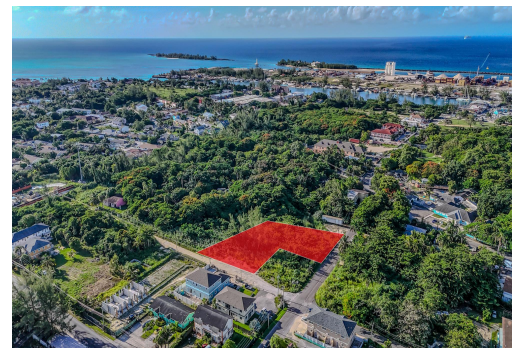


INFANT VIEW ROAD, Chippingham, New Providence/Paradise Island



This multi-family plot of land on the eastern side of Adastra Gardens provides easy and direct road...

This multi-family plot of land on the eastern side of Adastra Gardens provides easy and direct road access from St. Albans Dr. and Infant View Rd. Situated near downtown Nassau, shopping areas, major hotels, and stunning beaches, this location is ideal for savvy developers. With the potential to create premier condominiums, townhouses, or apartments, this plot allows for an excellent opportunity to meet the demands of Nassau's growing population. Make the most of this remarkable location and seize this lucrative investment opportunity....read more on our website.

Bedrooms: 0
Bathrooms: 0
Lot Size: 29395
Subdivision: Chippingham
Features: None

INFANT VIEW ROAD,
Chippingham, New
Providence/Paradise Island
Phone:



\$299,000 ID# M59029 [View Online](#)
www.sarlesrealty.com