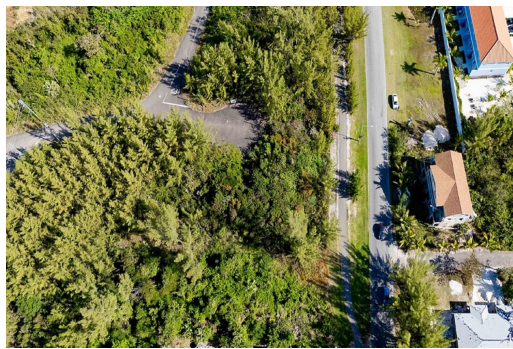


CORAL HARBOUR, Coral Harbour, New Providence/Paradise Island



Discover the perfect canvas for your single-family vision with this 16,800 square-foot lot ideally...

Discover the perfect canvas for your single-family vision with this 16,800 square-foot lot ideally situated just off the main Coral Harbor road on the west side, across from the new gated community of Via Della Rosa. Boasting a strategic location, a mere 10 minutes from Lynden Pindling International Airport, shopping, and dining, this prime real estate promises convenience and accessibility. The property offers an excellent opportunity for a well-designed single-family development, marrying modern amenities with the tranquility of Coral Harbor. Don't miss the chance to invest in this promising parcel that epitomizes the ideal fusion of comfort and accessibility in a sought-after location....read more on our website.

Bedrooms: 0

Bathrooms: 0

Lot Size: 16800

Subdivision: Coral Harbour

Features: Family Oriented,

Fully Fenced, Highway

Access, Pets Allowed,

Quiet Area, Road -

Paved, Treed Lot

LOT 78 CORAL HARBOUR,
Coral Harbour, New
Providence/Paradise Island

Phone:



\$252,000 ID# M59008 [View Online](#)
www.sarlesrealty.com