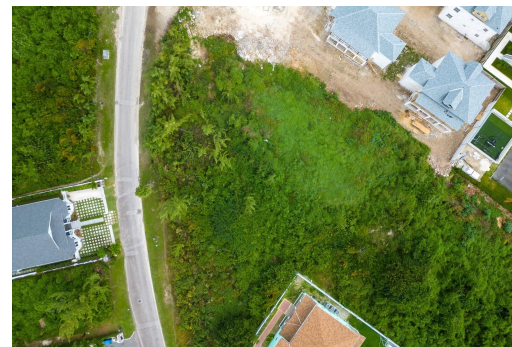


PALM CAY LOT, Yamacraw, New Providence/Paradise Island



Discover the charm of Palm Cay's beachfront community with a distinctive opportunity to...

Discover the charm of Palm Cay's beachfront community with a distinctive opportunity to acquire a prime lot in one of Nassau's most sought-after residential developments. Nestled in the heart of lot section 4, this parcel, Lot No. 163, promises seclusion while remaining in close proximity to the Palm Cay Clubhouse, Marina, and the beach. Expanding across 13,617 sq. ft, Lot No. 163 provides generous space for your dream home and outdoor sanctuary. Prospective residents have the chance to craft their envisioned home with architectural freedom and Palm Cay's design standards, complemented by the convenience of the upcoming retail furniture shop. Revel in a range of residents' amenities, including 24-hour security, a clubhouse featuring two pools, indoor and outdoor dining, tennis courts, a sp...read more on our website.

Bedrooms: 0
Bathrooms: 0
Lot Size: 13617
Subdivision: Yamacraw
Features: 24 Hour Security, Easy Access, Family Oriented, Gated Community, Marina Nearby, Pets Allowed, Recreation Nearby, Road - Paved, Shopping Nearby, Short Term Allowed

PALM CAY LOT, Yamacraw, New Providence/Paradise Island
Phone:



\$415,000 ID# M59015 [View Online](#)
www.sarlesrealty.com