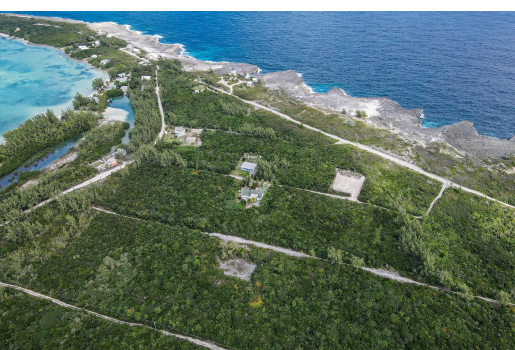


109A WHALE POINT ESTATES, Whale Point, Eleuthera



Located near the calm beach of Bottom Harbour and the wild cliffs of the Atlantic, this Whale Point...

Located near the calm beach of Bottom Harbour and the wild cliffs of the Atlantic, this Whale Point lot is ideally situated in beautiful Eleuthera. The property is perfectly located a stone's throw away from the amazing Glass Window Bridge, where you can experience deep blue waters and sandy beaches all at once or charter a ferry and hop over to world-famous Harbour Island! This lot in historic Eleuthera, "land of the free" with its beaches and caves and pineapples would make a great location for a dream or vacation home. The North Eleuthera airport is only a 20 minute drive while the capital Governor's Harbour, Tarpum Bay and other settlements await. Make your offer today!...read more on our website.

Bedrooms: 0
Bathrooms: 0
Lot Size: 5000
Subdivision: Whale Point
Features: Easy Access,
Family Oriented, Highway
Access, None, Pets
Allowed, Quiet Area,
Treed Lot, View - Ocean

109A WHALE POINT ESTATES,
Whale Point, Eleuthera
Phone:



\$34.500 ID# M58869 [View Online](#)
www.sarlesrealty.com