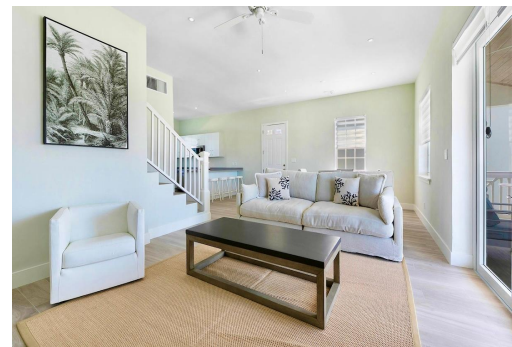
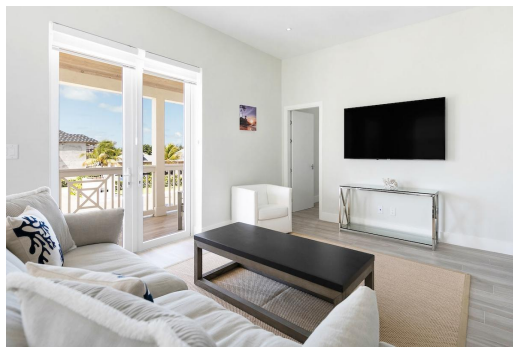


2 PALM CAY, Yamacraw, New Providence/Paradise Island



Undeniably the largest home in Galleon Bay, condo No. 8 offers effortless, turnkey, island-style...

Undeniably the largest home in Galleon Bay, condo No. 8 offers effortless, turnkey, island-style living in award winning Palm Cay. This home enters to an open plan living/dining/kitchen showcasing a furniture palette of calming island blues and greys. Practically everything is brand new and barely touched. Hurricane proof windows and patio doors push out onto an expansive covered balcony offering views over the marina and community. The master suite provides for luxurious serenity, a modern bathroom and a large walk-in closet. There are two more guest bedrooms on the main floor - each decorated in opulent island-style and supported by a large, guest bathroom. The second floor suite affords an independent living space with its own mini kitchenette, small sitting area, and full sized bedroom...read more on our website.

Bedrooms: 4
Bathrooms: 3
Lot Size: 2522
Subdivision: Yamacraw
Features: 24 Hour Security, Furnished, Hurricane Windows, Marina Nearby, Night Security, Pets Allowed, Recreation Nearby, Recreational, Shopping Nearby, Short Term Allowed, Stand-by Generator, Swimming Pool

2 PALM CAY, Yamacraw, New Providence/Paradise Island
Phone:



\$1,100,000 ID# M58739 [View Online](#)
www.sarlesrealty.com