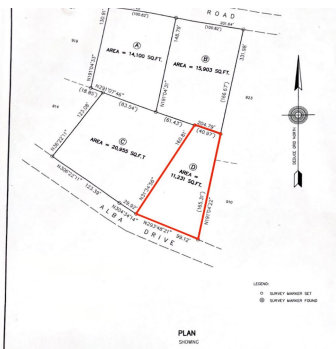


DRIVE, EXUMA VIEW, Little Exuma, Exuma & Exuma



Elevate your perspective with this expansive 11,231 sqft single-family lot nestled in the serene...

Elevate your perspective with this expansive 11,231 sqft single-family lot nestled in the serene Exuma View community. Seize the opportunity to construct your dream home atop this elevated plot, offering sweeping vistas of the Bahama Bank and surrounding barrier islands. With an impressive 35-degree elevation, with sea views that promise an unparalleled living experience. Situated on the tranquil leeward side of Little Exuma, Exuma View is conveniently located just a 40-minute drive from George Town International Airport. Within close proximity, discover the renowned Tropic of Cancer Beach in a mere 7-minute drive, as well as easy access to Pretty Molly and Forbes Hill Beaches within 2-3 minutes by car. Access is facilitated via Queens Highway, ensuring convenience with paved roads and pow...read more on our website.

Bedrooms: 0
 Bathrooms: 0
 Lot Size: 11231
 Subdivision: Little Exuma
 Features: Highway Access, None, Potential Recreation, Private Setting, Quiet Area, Recreation Nearby, View - Lake

ALBA DRIVE, EXUMA VIEW,
 Little Exuma, Exuma &
 Exuma Cays
 Phone:



\$60,000 ID# M58641 [View Online](#)
www.sarlesrealty.com