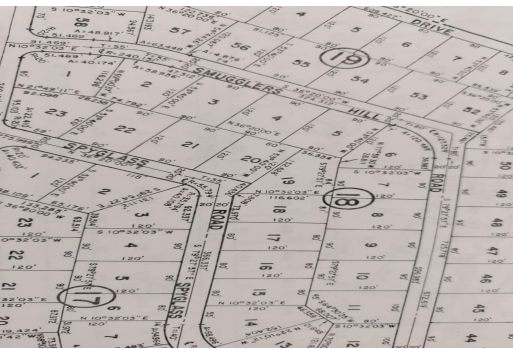
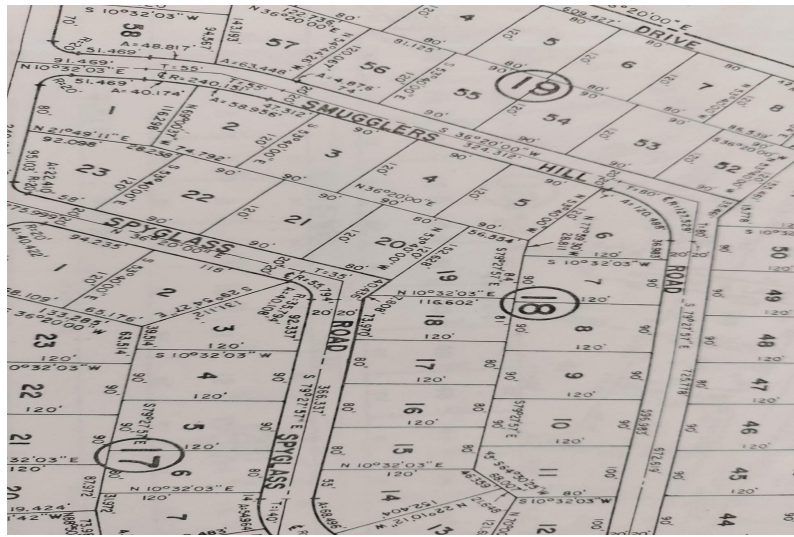
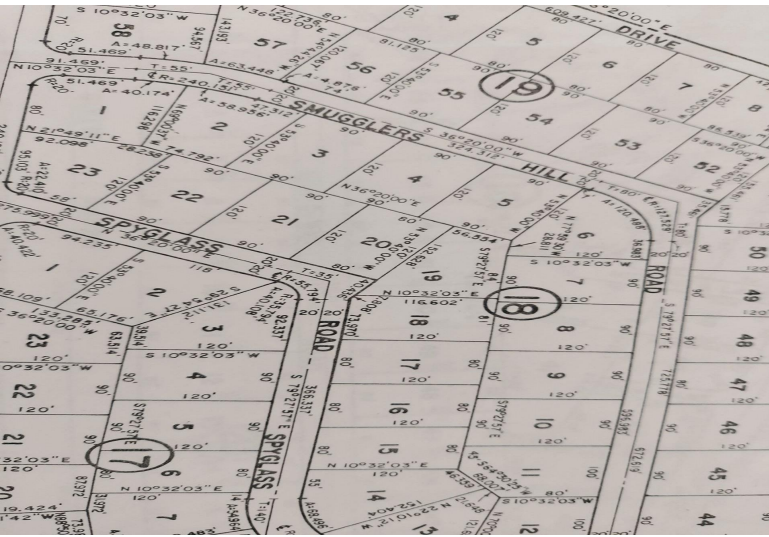


RAINBOW BAY LOT 19, Rainbow Bay, Eleuthera



Lot 19, block 18, is a most unusual property tucked away on Spyglass Rd, potentially with double...

Lot 19, block 18, is a most unusual property tucked away on Spyglass Rd, potentially with double views of both sides of the island. This is a tranquil and delightful place to build a vacation home, not far from several beaches, watching the beauty of dawn and later in the day the vibrant colours of sunset. For peace and privacy, this cannot be beaten. Rainbow Bay is well situated for exploring the island and has several shops in the vicinity and a couple of restaurants, including the Rainbow Inn, which is well known for its excellent homemade pizza. For beautiful beaches and a laid-back lifestyle, this is perfection. The nearest airport is Governors Harbour Airport [GHB], which is only a 15-minute drive....read more on our website.

Bedrooms: 0
 Bathrooms: 0
 Lot Size: 9600
 Subdivision: Rainbow Bay
 Features: Family Oriented,
 Hillside, None, Pets
 Allowed, Quiet Area,
 Road - Paved, Treed Lot

RAINBOW BAY LOT 19, Rainbow
 Bay, Eleuthera
 Phone:



\$45,000 ID# M58602 [View Online](#)
www.sarlesrealty.com