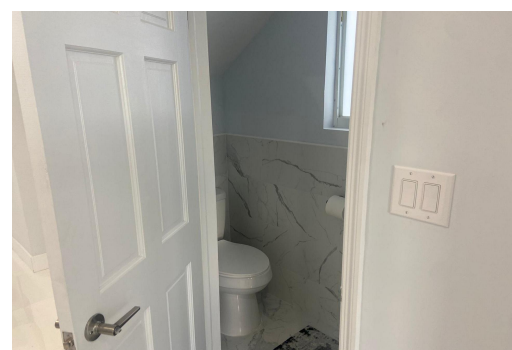
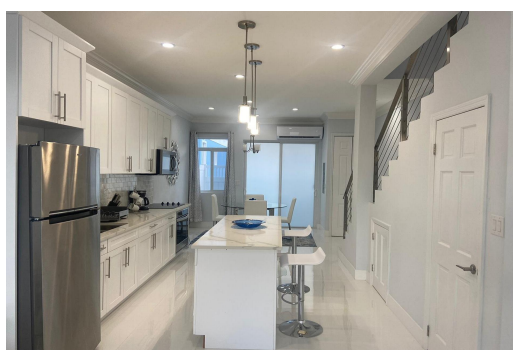


HILLTOP ATLANTIC DR, West Bay Street, New Providence/Paradise Island



This contemporary-styled two-bedroom condominium is located in the tranquil area of The Caves and...

This contemporary-styled two-bedroom condominium is located in the tranquil area of The Caves and is just 5 minutes from the beach. This unit offers 1,150 sq. ft of interior space, each space is topped with modern fittings such as quartz countertops in the kitchen and stylish furniture in the bedrooms and living room. Also included is a private patio, pool, and pool house, ample parking space, and is fully enclosed and secured by security cameras. Tenants are also responsible for the utilities. Call us today to schedule a viewing!...read more on our website.

Bedrooms: 2

Bathrooms: 2

Lot Size: 21780

Subdivision: West Bay Street

Features: Can Be Rented,
Fully Walled, Furnished,
Landscaped, Road -
Paved, Swimming Pool

CAVES HILLTOP ATLANTIC DR,
West Bay Street, New
Providence/Paradise Island
Phone:



\$4,000 ID# M58466 [View Online](#)
www.sarlesrealty.com