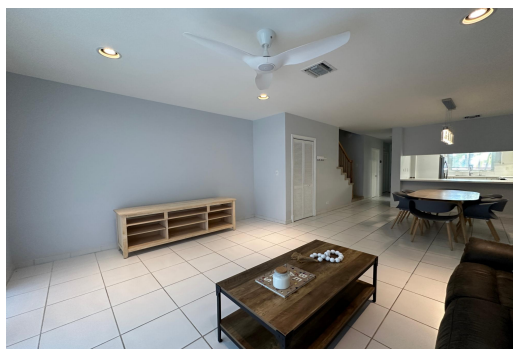


NEW PROVIDENCE, Yamacraw, New Providence/Paradise



This meticulously maintained turnkey garden townhouse is nestled in the serene Sea Pointe community...

This meticulously maintained turnkey garden townhouse is nestled in the serene Sea Pointe community of Port New Providence. Boasting an abundance of natural light and a spacious layout, this unit spans three levels and offers ocean views from the second and third floors. Comprising three bedrooms, three and a half bathrooms, a well-appointed kitchen, a cozy dining area, and a welcoming living room that seamlessly extends to a patio, this residence exudes comfort and charm. Notable features include hurricane impact windows and doors, convenient roll-down shutters, a private balcony off the master bedroom, a dedicated laundry closet, ceiling fans for added comfort, and two designated parking spots. Furthermore, residents of Sea Pointe enjoy an array of amenities, including access to a privat...read more on our website.

Bedrooms: 3
Bathrooms: 3
Lot Size: 0
Subdivision: Yamacraw
Features: 24 Hour Security, Cable, Furnished, Garden Area, Gated Community, Hurricane Windows, Impact Windows, Marina Nearby, Roll Down Shutters, Stand-by Generator, View - Ocean

PORT NEW PROVIDENCE,
Yamacraw, New Providence/Paradise Island
Phone:



\$510,000 ID# M58292 [View Online](#)
www.sarlesrealty.com