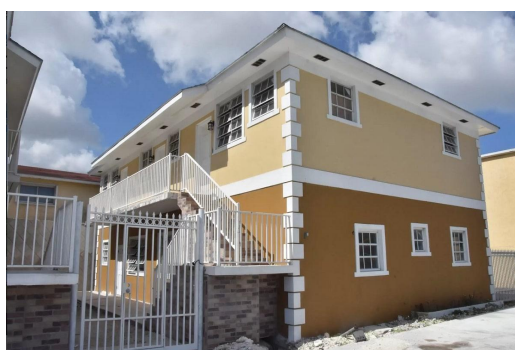


# GARDEN HILLS ESTATE #2, Soldier Road, New Providence/Paradise Island



**Are you looking for an Investment? Here's your chance to own a well-constructed income...**

Are you looking for an Investment? Here's your chance to own a well-constructed income property in central Garden Hills. These multi-family buildings were originally built in 2006, the current owners took over the property as an uncompleted shell approximately 8 years ago in 2016 and did a complete refurbishment of all apartments, including full electrical rewiring, full re-plumbing and a new roof on both buildings. The buildings are in very good condition and well-maintained. There are two two-story detached multi-family residential buildings, each with 5 apartment units, 2 two-bedroom apartments, and 3 one-bedroom apartments, for a total of 10 apartment units. Together, 4 x 2 bedroom and 6 x 1 bedroom units produce a generous return on your investment. Each ground floor encompasses 3,248...read more on our website.

Bedrooms: 14

Bathrooms: 10

Lot Size: 8705

Subdivision: Soldier Road

Features: Can Be Rented,

Family Oriented, Highway

Access, Road - Paved,

Unfurnished

GARDEN HILLS ESTATE #2,

Soldier Road, New

Providence/Paradise Island

Phone:



**\$1.149,000 ID# M58558 View Online**  
**[www.sarlesrealty.com](http://www.sarlesrealty.com)**