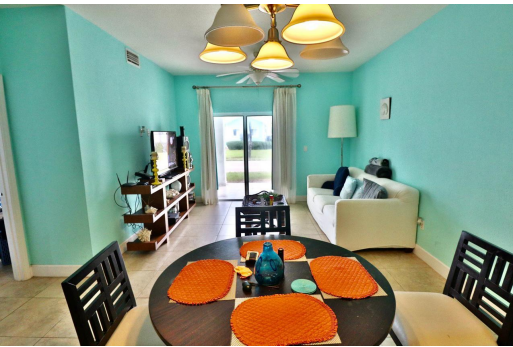


BIMINI BAY ANGLER CONDO, North Bimini, Bimini



This 2-bed -2-bath, luxury garden view Angler model covers one main floor and is 1,385 sq ft. The...

This 2-bed -2-bath, luxury garden view Angler model covers one main floor and is 1,385 sq ft. The floor plan contains two rooms, two bathrooms, a living/dining area, and an external deck. This unit brings together the natural light, new furniture that catches the brilliant shades of the fresh Bimini blue skies. The unit is fully furnished and includes granite countertops, stainless steel kitchen appliances and a washer and dryer combo. Located in the third phase of Bimini Bay community, Sea Esta is near the revered Ocean 360 Beach Club, walking distance to the Aqua Grille pool and a quick golf cart ride to the Hilton Hotel, Resort World casino and Sabor's seafood grille and pool bar. Enjoy all the amenities of this property the casino nightlife, great food, friendly people, world class s...read more on our website.

Bedrooms: 2
Bathrooms: 2
Lot Size: 0
Subdivision: North Bimini
Features: Cable, Can Be Rented, Easy Access, Family Oriented, Furnished, Gated Community, Impact Windows, Landscaped, Marina Nearby, Recreation Nearby

BIMINI BAY ANGLER CONDO,
North Bimini, Bimini
Phone:



\$245,000 ID# M58582 [View Online](#)
www.sarlesrealty.com