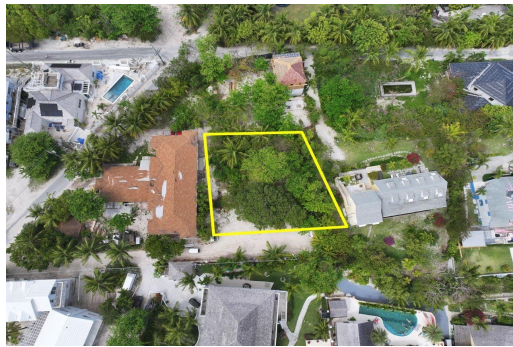
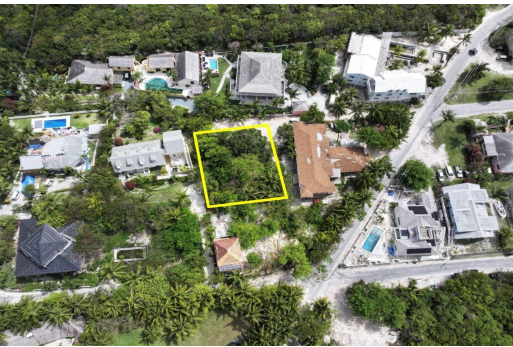


NESBITT STREET, Harbour Island, Eleuthera



This inviting 7,600 sq. ft. lot on Nesbitt Street is nestled in a private setting adjacent to the...

This inviting 7,600 sq. ft. lot on Nesbitt Street is nestled in a private setting adjacent to the former Sea Shells Hotel, which offers an excellent opportunity to build a charming cottage within walking distance of the Pink Sand Beach. Enjoy the convenience of existing infrastructure with power and water already to the lot, making it easier to create your ideal getaway. Don't miss the chance to own a piece of paradise within walking distance to one of the world's most beautiful beaches....read more on our website.

Bedrooms: 0
Bathrooms: 0
Lot Size: 7600
Subdivision: Harbour Island
Features: None

NESBITT STREET, Harbour Island, Eleuthera
Phone:



\$1,200,000 ID# M57611 [View Online](#)
www.sarlesrealty.com