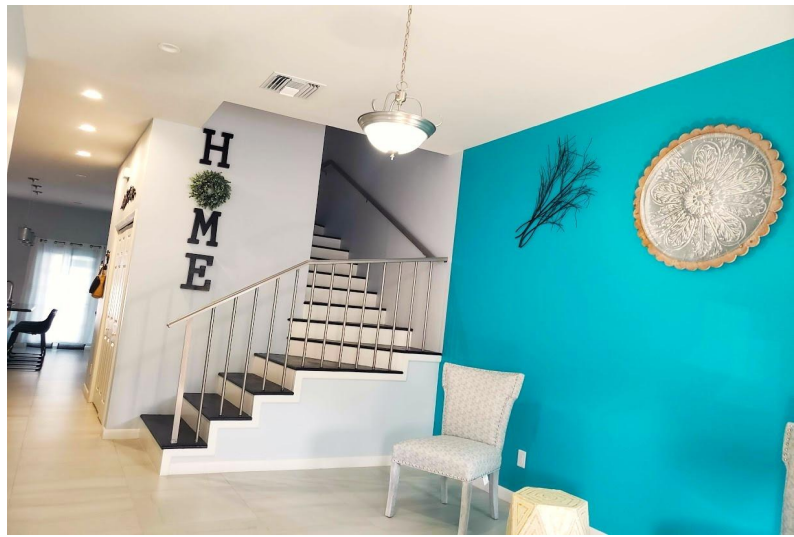
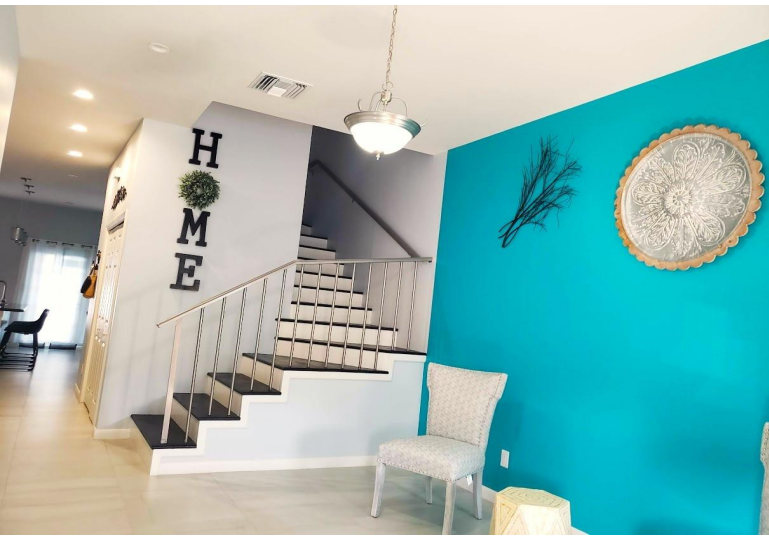


TOWNHOUSE WESTLAKE, West Bay Street, New Providence/Paradise Island



Experience refined island living at Unit 2 Ivy Townhouse, a luxurious 3-bedroom + office space,...

Experience refined island living at Unit 2 Ivy Townhouse, a luxurious 3-bedroom + office space, 3-bathroom rental nestled in the prestigious Westlake Plantation on West Bay Street, Nassau, Bahamas. Spanning 2,051 sqft, this elegantly appointed townhouse boasts a spacious living area, gourmet kitchen with quality appliances, and a private patio for outdoor relaxation. Enjoy the convenience of central air conditioning, a laundry room, and ample parking. Residents also have access to community amenities including a swimming pool, fitness center, and landscaped grounds. Located moments from pristine beaches, dining, and cultural attractions, Unit 2 Ivy Townhouse offers an unparalleled blend of comfort, style, and convenience in a coveted island setting. Schedule your viewing today and embrace ...read more on our website.

Bedrooms: 3
Bathrooms: 3
Lot Size: 2051
Subdivision: West Bay Street
Features: Fully Walled, Furnished, Swimming Pool

IVY TOWNHOUSE WESTLAKE,
West Bay Street, New Providence/Paradise Island
Phone:



\$4,700 ID# M58572 [View Online](#)
www.sarlesrealty.com