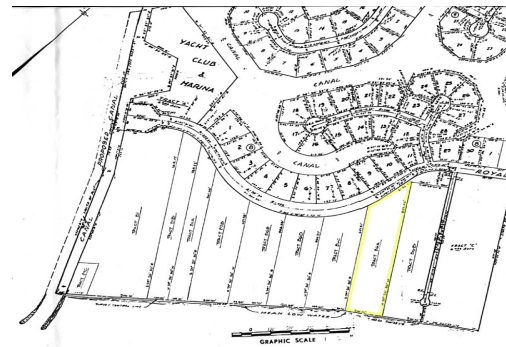
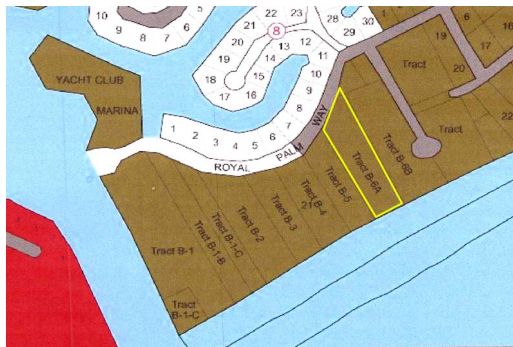


BEACH FRONT LOT



200 feet on the beach. The owner may consider joint venture

This magnificent 3.49 acre beachfront land is located on a gorgeous Lucayan beach and offers 200 linear feet of oceanfront. Ideal for a sizable development.

Complete development plans for 160 unit

Embassy Beach resort by Adache Architects in Ft. Lauderdale at cost of \$ 700,000

...read more on our website.

Lot Size: 3.49

Maint. Fees: -

Subdivision: Bahama Reef

Yacht and Country Club

Features: Beach access,

Ocean front

Beachfront

Location location location

High rise multi family

zoning



Ina Simmons

Phone: (242)351-9081

inasimmons@gmail.com



\$2,900,000 ID# 5677 [View Online](#)
www.sarlesrealty.com

Ph: (242) 351-9081 | Web: www.sarlesrealty.com