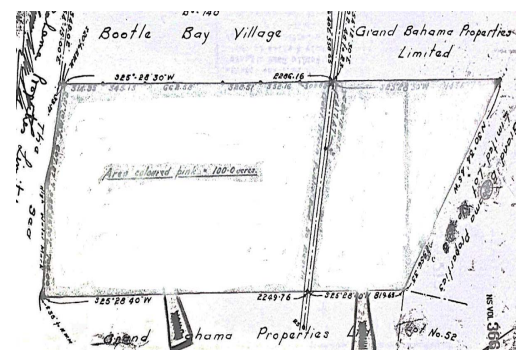
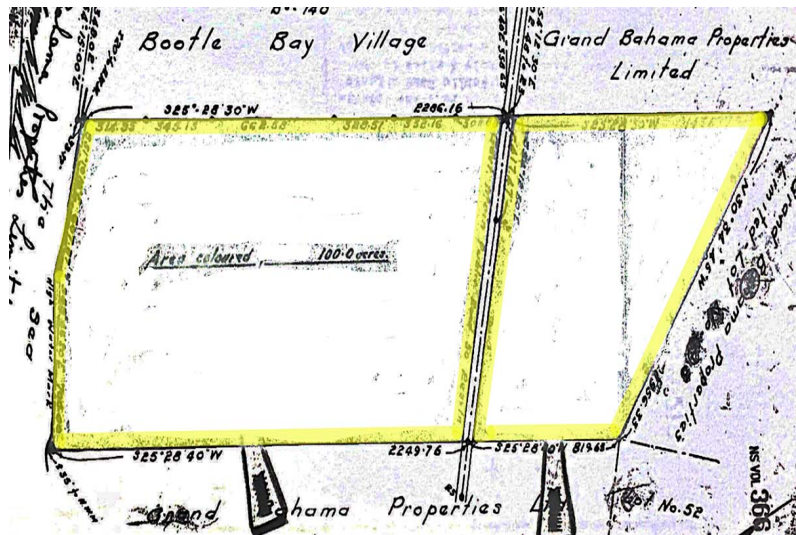
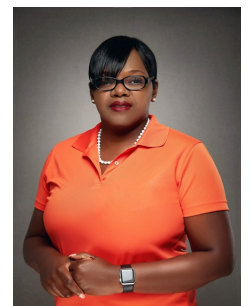


True East Commercial Land



One hundred (100) Acre Development located on the first tract to the east of Bootle Bay and approximately one mile from the Ginn Sur Mer project....read more on our website.

Lot Size: 100 Acres
 Maint. Fees: -
 Subdivision: West End /
 West Grand Bahama
 Features: Beach access,
 Ocean front



Shelly Gardiner
 Phone: (242)351-9081
 gardinershelly@gmail.com



\$10,000,000 ID# 51158 [View Online](#)
www.sarlesrealty.com

Ph: (242) 351-9081 | Web: www.sarlesrealty.com