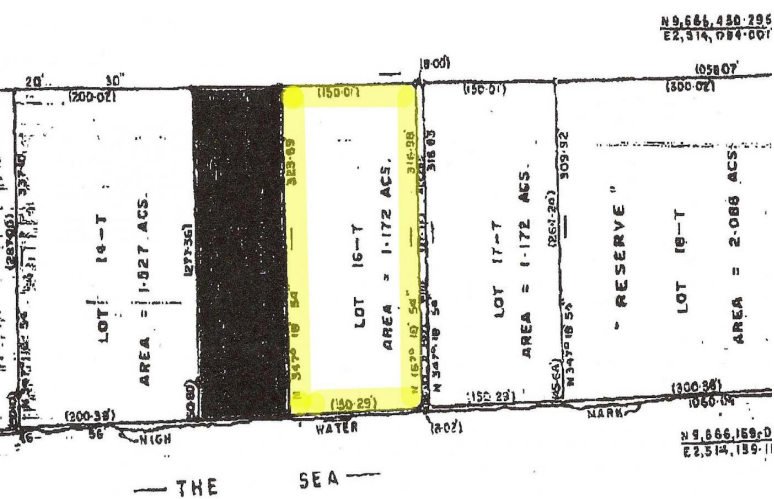


Turtle Reef Vacant Land



Beach front land situated in East Grand Bahama, Turtle Reef Subdivision.

This beach front land located on East Grand Bahama in the Turtle Reef Subdivision is about 25 minutes east of Freeport. Lot boasts 150 feet of beachfront. Turtle Reef is a developing area and features some of the most gorgeous single family homes. The property has open zoning.
...read more on our website.

Lot Size: 1.17 Acres
Maint. Fees: -
Subdivision: Turtle Reef
Features: Beach access
150' on the Beach



James Sarles

Phone: (242) 351-9081
jamesarlesrealty@gmail.com



\$299,000 ID# 10371 [View Online](#)
www.sarlesrealty.com